

# NEW GUINEA

## DARWIN TO CAIRNS



Few travel experiences come close to the wonder that is Australasia. From shoreside expeditions to immersion in local culture, to Zodiac cruises that will take you far off the beaten path, discover a seldom visited part of the world. Enjoy the depths of Papua New Guinea, known for its impenetrable secrets, authentic culture and superlative snorkeling.



**DATES:** 2022 – SEP 05

**DURATION:** 20 DAYS/19 NIGHTS

**EMBARK:** DARWIN, AUSTRALIA

**DISEMBARK:** CAIRNS, AUSTRALIA

**SHIP:** Silver Explorer

**FROM:** \$17,280

After 10% Early Booking Savings  
Free Economy or reduced rate Business Class Air  
Pre-Cruise transfers and hotel.

## ITINERARY

### DAY 1 – DARWIN, AUSTRALIA - ARRIVAL

Your included transfer will whisk you from airport to your deluxe hotel. Australia's capital of the north is a uniquely tropical city, and a historically isolated outpost of this vast, diverse country. The city was named in honor of Charles Darwin by the British settlers who established a frontier outpost here.

### DAY 2 – EXPLORE DARWIN, EMBARKATION

Enjoy your free time to explore the city and surrounds. Transfer to the pier for embarkation and departure.

### DAY 3 – DAY AT SEA

### DAY 4 – PULAU NAI, INDONESIA

After a wet landing on a white sandy beach, enjoy a cultural performance and traditional dances welcoming us to the village. Snorkel from the beach - lookout for Wrasses, Damselfish, Parrotfish, Surgeonfish and Anthieus hanging around the coral bommies, like brain coral, staghorn coral, fire coral and plate coral.

### DAY 5 – AIDUMA ISLAND, TRITON BAY, INDONESIA

On the southern coast of West Papua, Indonesia lies the small Aiduma Island, an oceanic paradise and a destination for divers and snorkelers. Below the surface of Aiduma's aquamarine waters live technicolor coral reefs that are home to a beautiful array of reef fish, including schools of large blue-ring angelfish, clownfish, striped angelfish and lionfish.

In 2008, the Kaimana Regency declared a 6000 square kilometer (over 2,300 square miles) Marine Protected Area around the waters of Triton Bay. It is truly second to none, and the area offers everything from the tiniest pygmy seahorses, to large and graceful whale sharks.



### DAY 6 – DEN WEG ISLANDS, INDONESIA

The Den Weg Islands are known for their ancient rock art, drawn on canyon walls, which are visible only by boat. The drawings were made using naturally red materials, resembling human blood.

### DAY 7 – DAY AT SEA

### DAY 8 – PULAU MIOSSU, INDONESIA

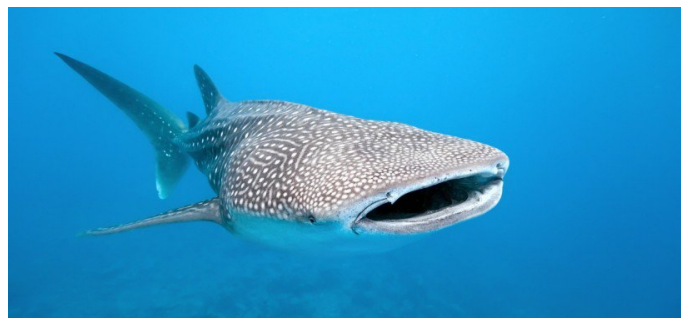
Almost totally covered in coconut palm trees, Pulau Miossu has just a few houses and is occasionally visited to harvest coconut and to enjoy the white sandy beaches and the rich underwater world.

### DAYS 9 - AURI ISLANDS, INDONESIA

The Auri Islands lie within the Cenderawasih Bay on the northern coast of West Papua, New Guinea, Indonesia. Cenderawasih Bay is dotted with hundreds of small islands and atoll's that are home to some of the most pristine hard coral reefs in Indonesia with one of the highest concentrations of endemic fishes in the Pacific Ocean. The western part of the bay was declared a marine park in 2002 encompassing 30 square miles, making it the largest in Southeast Asia. There are many different styles of reefs found here, including fringing reefs, barrier reefs, atolls, patch reefs, and shallow water reef mounds.

### DAY 10 – KWATISORE, CENDERAWASIH BAY, INDONESIA

Kwatisore Bay is located west of Kwatisore Peninsula at the southwestern end of the wide Cenderawasih Bay. Some dive companies claim that Cenderawasih Bay is the whale shark capital of the world, and the area near Kwatisore Bay is one of the few places in the world where encounters can almost be guaranteed.



### DAY 11 – DAY AT SEA

### DAY 12 – VANIMO, PAPUA NEW GUINEA

Vanimo is the capital of the Sandaun (Sundown) Province. It is one of only two towns in this remote region of Papua New Guinea. Vanimo has lovely beaches and some picturesque villages in the vicinity.



### **DAY 13 - ALI ISLAND, PAPUA NEW GUINEA**

Ali Island is one of the four islands located close to Aitape, off the northern coast of Papua New Guinea. The eastern shore of Ali Island has a beautiful white sandy beach and offers swimming and snorkeling. The five villages on the island connect via well-maintained trails. The indigenous populations of this island are welcoming to guests and maintain their unique way of living and dressing, with colorful ceremonial headdresses, arm bands and grass skirts.



### **DAY 14 - KOPAR VILLAGE, SEPIK RIVER, PAPUA NEW GUINEA**

Kopar is a small village of no more than 200 inhabitants at the mouth of the Sepik River. Since the Sepik meanders through swampy areas, the locals have cut narrow channels through the swamps to be able to connect more easily with their neighbors.

### **DAY 15 – TUAM ISLAND, PAPUA NEW GUINEA**

Tuam is an uplifted coral atoll covered in palm trees. Highly exposed to the trade winds, the islanders have set up protective walls made out of palm-branches giving the village the look of a fortified castle from a distance. A trail marked by white sand leads from the landing site to the settlement area of neatly organized wooden huts and houses with pandanus-thatched roofs. The island also has a spectacular reef and snorkeling next to the drop-off can reveal many colorful reef fish.

### **DAY 16 – WAGIFA ISLAND, PAPUA NEW GUINEA**

A traditional village experience awaits travelers to Wagifa Island. Few overseas visitors reach this island so the excitement of locals in their canoes and on shore is infectious. Many traditions are maintained including music, dance and singing. Canoes of hollowed out trees, often stabilized with outriggers, are essential to all villagers. Watch the skill of the paddlers young and old

as they paddle to greet us. There are two major food sources—seafood and cassava. Cassava is also called yuca or manioc elsewhere, and the starch extracted from it is known as tapioca. Originally from Brazil, cassava tubers are now a major carbohydrate of the tropics worldwide.

### **DAY 17 - DEI DEI HOT SPRINGS, FERGISSON ISLAND - DOBU ISLAND, PAPUA NEW GUINEA**

On Fergusson's south side are the famous Dei Dei geysers — natural hot springs that periodically erupt with vapor steam next to mud pools and a warm stream. The hot springs are still used by locals to cook food in palm frond and pandanus leaf baskets placed into the boiling hot water. Birds in the area include Eclectus Parrots, Yellow-bellied Sunbirds and the endemic Curl-crested Manucode – a bird-of-paradise. Dobu is a small island formerly feared because of black magic and the local “witch” doctors cursing the healthy or treating the sick. An anthropological study was done by Reo Fortune in the 1930s which resulted in the book “The Island of Sorcerers”. A stroll through the main village on the northwestern tip will show the school, church and trails leading along the shore passing traditional thatched houses and gardens.

### **DAY 18 – SAMARAI, PAPUA NEW GUINEA**

Samarai is a tiny island south of Papua New Guinea's southeastern peninsula dwarfed by neighboring islands. Once a famous trading port and the second-largest settlement in the Territory of Papua (the Australian-administered southern part of what today is Papua New Guinea), Samarai used to be Milne Bay Province's capital until 1968 when administrators were moved to mainland and the town of Alotau. The relocation was necessary as the 29-hectare (72-acre) island was simply overcrowded. With only about 450 residents remaining today, it still is one of the most densely settled islands in Papua New Guinea.

### **DAY 19 – DAY AT SEA**

### **DAY 20 – CAIRNS, AUSTRALIA - DISEMBARKATION**

Warmly welcoming you to the natural wonders of the Great Barrier Reef, Cairns is a treasure trove of rich tropical beauty and incredible sea life.

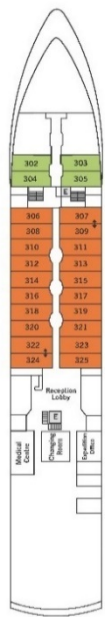
### **Transfer to airport or hotel.**

Depart for home, plan to stay a day or two, or travel on to other areas of Australia, or South Pacific.

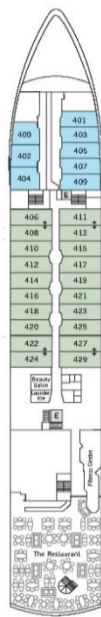
**Pre- and post-cruise programs are available.**



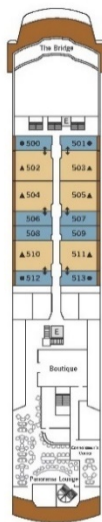
SILVER EXPLORER – Deck Plans



**DECK 3**  
Reception Desk  
Medical Centre  
Changing Room  
Expedition Office



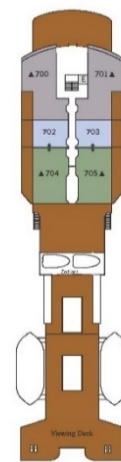
**DECK 4**  
Beauty Salon  
Laundrette  
Fitness Centre  
The Restaurant



**DECK 5**  
The Bridge  
Boutique  
Connoisseur's Corner  
Panorama Lounge



**DECK 6**  
Tor's Observation Library  
Explorer Lounge  
Zagara Spa  
The Grill



**DECK 7**  
Viewing Deck



**SUITE CATEGORIES**

- Owner's Suite
- Grand Suite
- Silver Suite
- Medallion Suite
- Veranda Suite
- Vista Suite
- View Suite
- Explorer Suite
- Adventurer Suite

**SPECIFICATIONS**

- I loyd's register
  - Ice-class rating . . . . . 1A
  - Crew . . . . . 118
  - Officers . . . . . International
  - Guests . . . . . 144
  - Tonnage . . . . . 6,072
  - Length . . . . . 354 Feet/107.9 Metres
  - Width . . . . . 52 Feet/15.8 Metres
  - Speed . . . . . 14 Knots
  - Passenger Decks . . . . . 5
  - 3rd Guest Capacity . . . . . 6,072
  - Queen beds . . . . . 5
  - Connecting suites . . . . . 702/704, 703/705, 500/502, 501/503, 504/506, 505/507, 510/512, 511/513, 307/309, 324/322, 406/408, 411/413, 427/424, 427/429
  - Refurbished . . . . . 2017
  - Registry . . . . . Bahamas
- Suite diagrams shown are for illustration purposes only and may vary from actual square footage. Please refer to suite specifications for square footage.

**2022 RATES: PER PERSON – DOUBLE – ALL INCLUSIVE\***

\*Port fees and taxes; gratuities to crew; open bar throughout ship; all excursions; team of Expedition leaders and guides. Economy air fare, or \$1500 per person credit; one night hotel both before and after the cruise; transfers; guided zodiac, sea and land tours.

| SUITE              | 10% Early Booking Savings |
|--------------------|---------------------------|
| Adventure – Deck 3 | \$17,280                  |
| Explorer – Deck 4  | \$18,000                  |
| View – Deck 3      | \$19,350                  |
| Vista – Deck 4     | \$20,160                  |
| Veranda – Deck 5   | \$27,990                  |
| Medallion – Deck 7 | \$33,210                  |
| Silver – Deck 5    | \$35,280                  |
| Grand – Deck 7     | \$38,790                  |
| Owner's – Deck 7   | \$42,840                  |



**Reservations & Information**  
**1-855-EXPLOR1 (397-5671)**

Email - [info@explorcruises.com](mailto:info@explorcruises.com)

[www.explorcruises.com](http://www.explorcruises.com)